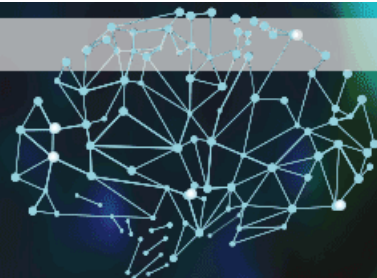


protein and cellular analysis

thermoscientific invitrogen

Education portal
to research success



ThermoFisher
SCIENTIFIC

Date	Time	Track	Presentation Title	Speaker
28-Jun	06:00 - 07:00 AM		Practical considerations for fluorescence microscopy	Trillium Blackmer, Ph.D. Senior Staff Scientist, Biosciences Division, Thermo Fisher Scientific
28-Jun	07:00 - 08:00 AM		Chemistry and technology advancements in protein gel electrophoresis	Jun Ma Market Development Manager, Biosciences Division, Thermo Fisher Scientific
28-Jun	08:00 - 09:00 AM		Maximizing microscopy output in cell biology: A practical guide to high content imaging & analysis	Nicholas Dolman, Ph.D. Senior Staff Scientist, Biosciences Division, Thermo Fisher Scientific
28-Jun	09:00 - 10:00 AM		Exploring the art behind protein transfer	Emily Halbrader Product Manager, Protein and Cell Analysis, Thermo Fisher Scientific
28-Jun	10:00 - 11:00 AM		The power of multiplexing with Luminex technology	David Bourdon, Ph.D Senior R&D Manager and Immunoassay Strategy Lead, Biosciences Division, Thermo Fisher Scientific
28-Jun	11:00 - 12:00 PM		Fundamentals of flow cytometry: From fluorescence to function	Jolene Bradford, MLS, SCYM(ASCP)CM Associate Director, Strategic Collaborations, Biosciences Division, Thermo Fisher Scientific
28-Jun	05:00 - 06:00 PM		Fundamentals of flow cytometry: From fluorescence to function - Translated in Japanese	Jolene Bradford, MLS, SCYM(ASCP)CM Associate Director, Strategic Collaborations, Biosciences Division, Thermo Fisher Scientific

8-Nov	06:00 - 07:00 AM		New Approaches to Antibody Validation Using Immunoprecipitation and Mass Spectrometry	John Rogers, PhD Senior R&D Manager, Mass Spectrometry Reagents, Thermo Scientific Pierce Protein Research
3-May	10:00 - 11:00 AM		What are the current advances in Flow Cytometry?	J. Paul Robinson, PhD SVM Professor of Cytomics, Professor of Biomedical Engineering, Purdue University
30-May	09:00 - 02:00 PM		Protein and Cell Analysis Education Series featuring the Antibody Validation Forum	Aled Edwards, PhD CEO, Structural Genomics Consortium, University of Toronto, Toronto, Ontario, Canada; International Working Group for Antibody Validation (IWGAV) member Matt Baker Director of Strategy and Partnering for Antibodies and Immunoassay, Biosciences Division, Thermo Fisher Scientific Anita Bandrowski, PhD Scientific Lead, Neuroscience Information Framework, Center for Research in Biological Systems, University of California at San Diego, San Diego, California, USA; Founder and CEO of SciCrunc Paul K. Wallace, PhD Professor of Oncology, and Director, Flow and Image Cytometry Facility, Roswell Park Cancer Institute, Buffalo, NY, USA; Associate Professor of Pathology, State University of New York at Buff John Rogers, PhD Senior R&D Manager, Mass Spectrometry Reagents, Protein and Cell Analysis, Biosciences Division, Thermo Scientific Christoph Hergersberg, PhD Vice President of R&D for Protein and Cell Analysis, and Antibodies and Immunoassays, Biosciences Division, Thermo Fisher Scientific
6-Jun	08:00 - 09:00 AM		The new generation in immunoassays	David Bourdon, Ph.D Senior R&D Manager and Immunoassay Strategy Lead, Biosciences Division, Thermo Fisher Scientific
21-Jun	07:30 - 08:30 AM		Five steps for publication-quality fixed-cell imaging the first time	Jason Kilgore Technical Application Scientist, Thermo Fisher Scientific
7-Sep	06:00 - 02:00 PM		Improve your protein research knowledge by joining our 7 Steps of Protein virtual event!	

12-Sep	08:00 - 09:00 AM		Addressing the antibody reproducibility crisis: A panel discussion with key scientific leaders	<p>Aled Edwards, PhD CEO, Structural Genomics Consortium, University of Toronto, Toronto, Ontario, Canada; International Working Group for Antibody Validation (IWGAV) member</p> <p>Matt Baker Director of Strategy and Partnering for Antibodies and Immunoassay, Biosciences Division, Thermo Fisher Scientific</p> <p>Anita Bandrowski, PhD Scientific Lead, Neuroscience Information Framework, Center for Research in Biological Systems, University of California at San Diego, San Diego, California, USA; Founder and CEO of SciCrunc</p> <p>Paul K. Wallace, PhD Professor of Oncology, and Director, Flow and Image Cytometry Facility, Roswell Park Cancer Institute, Buffalo, NY, USA; Associate Professor of Pathology, State University of New York at Buff</p> <p>John Rogers, PhD Senior R&D Manager, Mass Spectrometry Reagents, Protein and Cell Analysis, Biosciences Division, Thermo Scientific</p> <p>Christoph Hergersberg, PhD Vice President of R&D for Protein and Cell Analysis, and Antibodies and Immunoassays, Biosciences Division, Thermo Fisher Scientific</p>
7-Nov	08:00 - 09:00 AM		WEBINAR: The power of multiplexing and applications of the QuantiGene Plex Assay in oncology research and diagnostics	<p>Godfrey Grech, PhD Associate Professor, Department of Pathology, Faculty of Medicine and Surgery, University of Malta</p>
31-Jan	08:00 - 09:00 AM		High Content Screening-Based Phenotypic Analysis Of Organotypic 3D Bronchial Tissues	<p>Diego Marescotti, PhD High Content Screening Manager, System Toxicology , Philip Morris International R&D</p>
21-Feb	06:00 - 07:00 AM		Multiparameter Cell Cycle Analysis	<p>James W. Jacobberger, PhD Professor Emeritus (Oncology), Director Cytometry & Microscopy Core, Case Comprehensive Cancer Center, Co-Director Immune Function Core, Case Center for AIDS Research</p>
21-Feb	03:00 - 04:00 PM		Multiparameter Cell Cycle Analysis	<p>James W. Jacobberger, PhD Professor Emeritus (Oncology), Director Cytometry & Microscopy Core, Case Comprehensive Cancer Center, Co-Director Immune Function Core, Case Center for AIDS Research</p>
22-Mar	08:00 - 09:00 AM		Simple and effective tools for antibody-drug conjugate screening and characterization	<p>Chris Langsdorf Staff Scientist, Thermo Fisher Scientific</p>